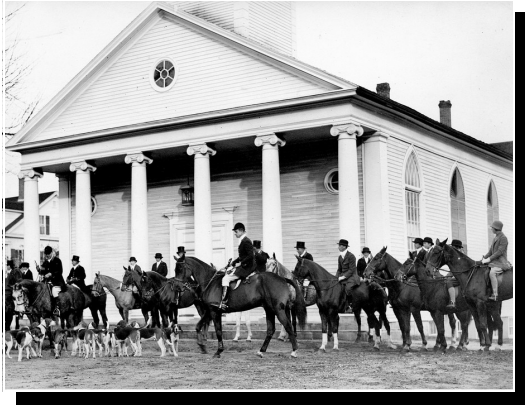


■ POMFRET'S HERITAGE

Horseback riding in Pomfret is a long established tradition. Pomfret was settled and worked when the horse was the only means of transportation. The Pomfret Horse & Trail Association wants to preserve that means.



Pomfret's unique rural character and agricultural heritage are the reason that most equestrians choose to live here. In order to preserve and maintain the century-old system of trails, we feel a responsibility to help protect the ever precious open space in town. In addition to encouraging good horseback riding practices, PHTA strives to inform, educate and expand public awareness of the opportunities available for equine enthusiasts.



■ PRESERVING OPEN SPACE

Open land is the jewel of our town and we, as riders, have come to treasure it because we have seen it as few others have. We have the rare opportunity of saving the character of Pomfret before it's too late.

The Pomfret Horse & Trail Association's goals are threefold: to establish a presence in the community and work with the various town boards in helping to preserve, promote, and acquire open space; to create a sense of community among equestrians and townspeople; and to work toward the preservation and enhancement of our farming heritage.



■ RESPONSIBILITY

The Connecticut Horse Council recommends that horses "leave no trace." That is our goal as well. Pomfret has been very horse friendly and we as horse people want to be good neighbors. By being responsible riders, we hope that landowners will continue their generosity in allowing access to their land.



Because we traverse private property, town land and public roads on our horses, the Pomfret Horse & Trail Association has developed trail use guidelines that include, among others, no dogs, no smoking, riding on the edge of fields, and observing the privacy of landowners when passing close to their homes. Members can be recognized by PHTA medallions attached to their saddles.

PHTA carries a liability insurance policy that protects landowners when members are on their property. Most members also carry personal liability insurance.

The essential joy of being with horses is that it brings us in contact with the rare elements of grace, beauty, spirit, and fire.

~ Sharon Ralls Lemon



OUR MISSION

The mission of the Pomfret Horse & Trail Association is to protect and enhance the interests of all horse lovers in the town of



Pomfret as part of its unique rural character and agricultural heritage. It is dedicated to preserving and maintaining the century-old system of trails, encouraging good horse-back riding practices, and protecting the ever precious open space in the town. It strives to inform, educate and expand public awareness of the opportunities available for equine enthusiasts in the town. This is made possible only through the cooperation of our generous landowners and conservation land managers who graciously allow passage through their properties.



The wind of heaven is that which blows between a horse's ears.

~ Arabian Proverb

MEMBERSHIP

Membership in the Pomfret Horse & Trail Association is open to all Pomfret residents interested in supporting and maintaining trails and open space in town. This includes land-owners, nature enthusiasts and equestrians of all ages, levels and disciplines—anyone wanting to help preserve Pomfret's rural character and agricultural heritage. Membership is also open to non-Pomfret residents, but they must be sponsored by a current member.



Dues are \$25 per year. Membership applications are available on our web site: www.pomfrehorseandtrail.com

Meetings are held at the Old Town House off Averill Road (Route 44). For more information, please email pomfrehorseandtrail@gmail.com



Member of the
Connecticut Horse Council



POMFRET HORSE & TRAIL ASSOCIATION



No hour of life is wasted that is spent in the saddle.

~ Winston Churchill

www.pomfrehorseandtrail.com